



LA-01 BP

Line sharing modem



- Multidrop applications
- Integrated by-pass function
- Galvanic isolation
- Transient suppression
- Code independent/transparent
- Ensures communication over long distances and in environments with high levels of interference
- Reliable performance and function

For Westermo W1 interface transmission characteristics see page 138

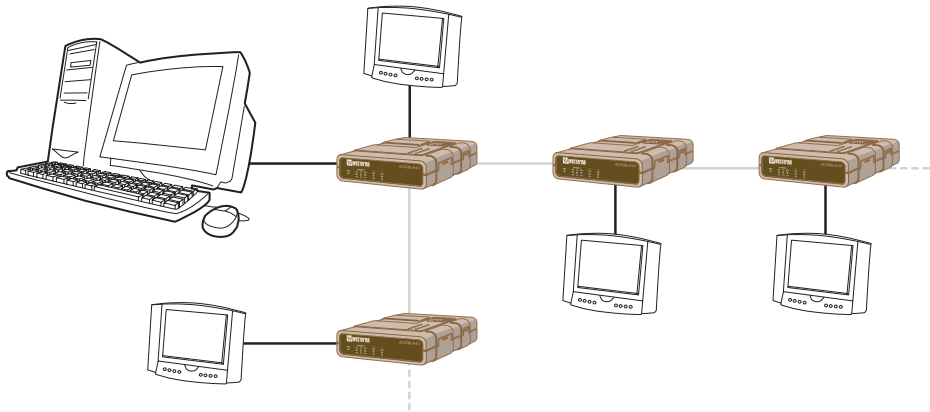
Field of application

The line sharer is used in multidrop applications where several devices need to communicate with a main computer/master. This can be, for example, to control or collect data from a number of substations. The Westermo transmission technology (W1) makes it possible to communicate with up to 18 km (11.81 mi) between modems. Equipment with an RS-232 interface can be connected and data rates up to 38.4 kbit/s are possible depending on the transmission range. The line sharer is fully transparent, which means connected devices must recognise their own address.

The line sharer features a by-pass function, which means that a line sharer that loses its power, for one reason or another, will be bypassed. This ensures communication for subsequent devices in a multidrop application. LA-01BP is designed as a table top device.

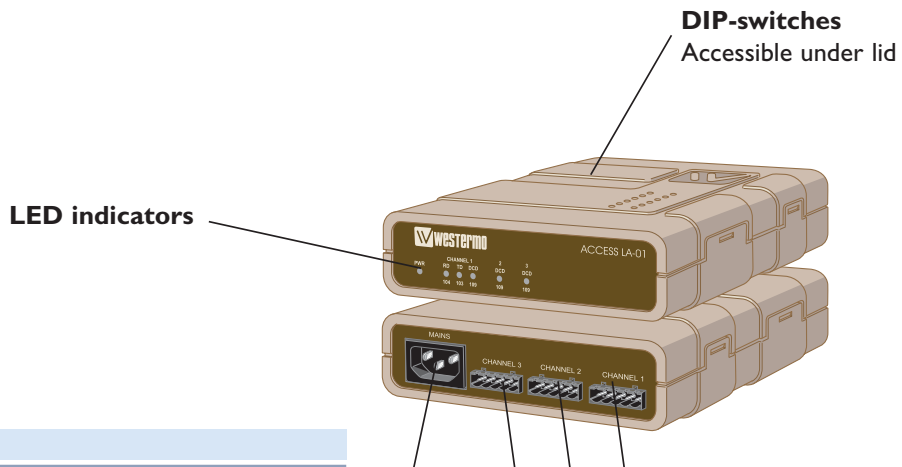


Application



Also see applications on pages 48 and 50

Interface



Mechanical

Dimensions (W x H x D)	161 x 53 x 139 mm (6.34 x 2.09 x 5.47 in)
Weight	0.6 kg (1.32 lb)
Assembly	Table top
Degree of protection	IP 20

Line connection

RS-232 or ± 10 mA balanced current loop W1
Up to 38.4 kbit/s

Power

	LA-01 BP AC
Operating voltage	103 – 132 VAC, 207 – 264 VAC
Rated current	30 mA @ 230 VAC
Rated frequency	48 – 62 Hz
Connection	Power